

# BNC series

## RF Coaxial Connector

### FEATURES

- A bayonet connector developed according to the US military standard MIL-C-39012/16-24
- Fast connection, high reliability
- Can be compatible with international BNC series connector products
- Widely used for the transmission of radio frequency signals in radio equipment and instruments

### TECHNICAL PARAMETER

Temperature: - 55~+155°C

Impedance: 50Ω、75Ω

Frequency: DC~4GHz

VSWR: ≤1.30(Straight)

Insulation resistance: ≥5000MΩ

Dielectric strength: 1500V(rms)

Operating Voltage: 500V (rms)

Contact resistance: Center content: ≤2mΩ  
Outer contact: ≤2.5mΩ

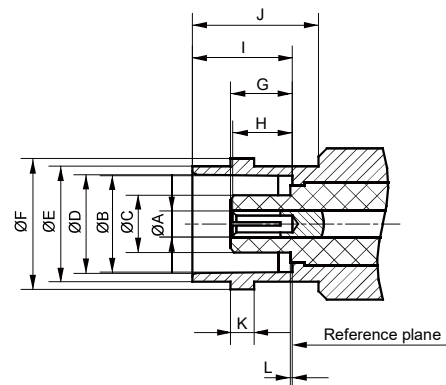
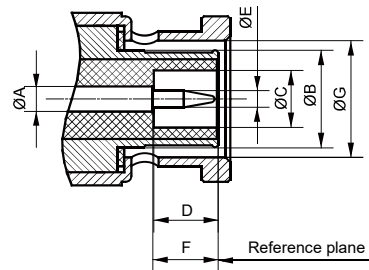
Mechanical endurance: 500 OPS

### IMPLEMENTATION CRITERIA

IEC 61169-8 GB/T 11313.8



### INTERFACE DIMENSIONS

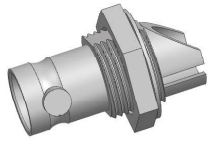


#### Male connector

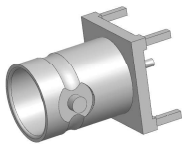
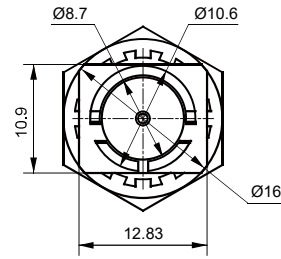
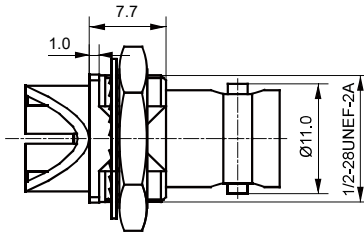
	Min(mm)	Max(mm)
<b>A</b>	2.14 Nominal value	
<b>B</b>	/	/
<b>C</b>	4.83	/
<b>D</b>	5.28	/
<b>E</b>	1.32	1.37
<b>F</b>	5.33	/
<b>G</b>	9.78	9.91

#### Female connector

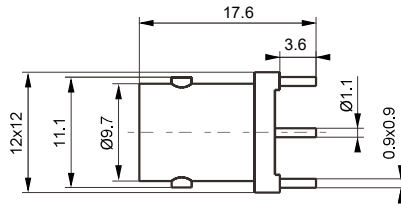
	Min(mm)	Max(mm)
<b>A</b>	2.14 Nominal value	
<b>B</b>	8.10	8.15
<b>C</b>	/	4.72
<b>D</b>	8.31	8.46
<b>E</b>	9.6	9.7
<b>F</b>	10.97	11.07
<b>G</b>	4.55	5.23
<b>H</b>	/	5.28
<b>I</b>	8.31	8.51
<b>J</b>	10.52	/
<b>K</b>	1.91	2.05
<b>L</b>	/	0.15



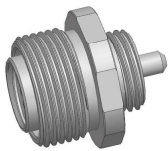
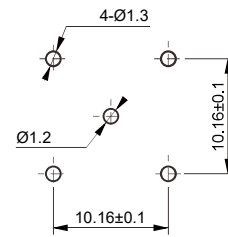
**BNC-75KHE**



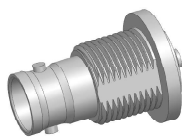
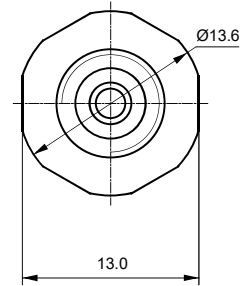
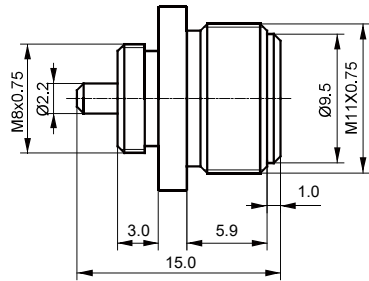
**BNC-KHD**



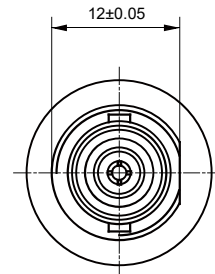
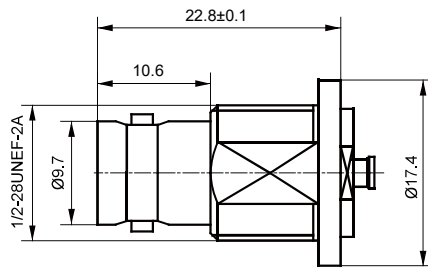
PC BOARD LAYOUT

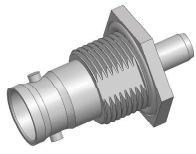


**BNC-KYD-1**

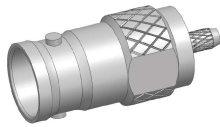
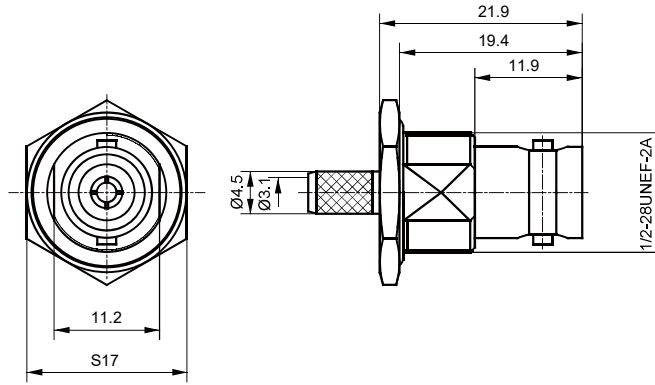


**BNC-KYB1**

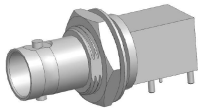
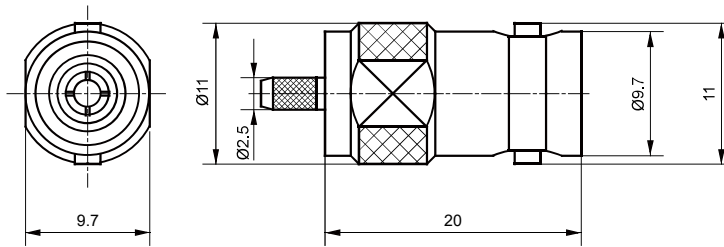




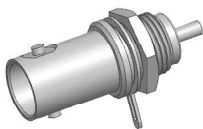
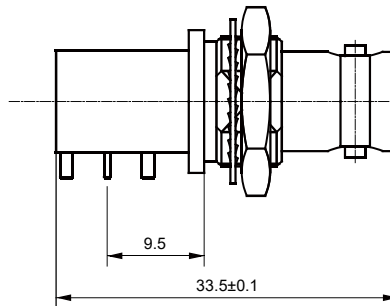
**BNC-75KY12Y**



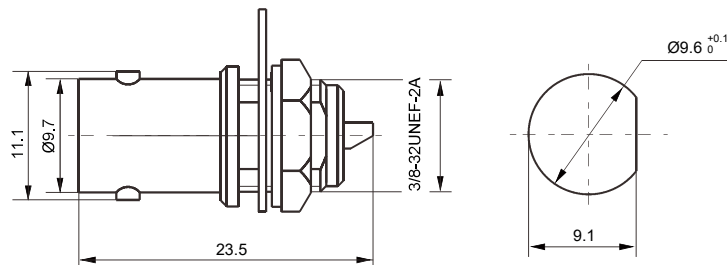
**BNC-K3Y**



**BNC-75KYWE**

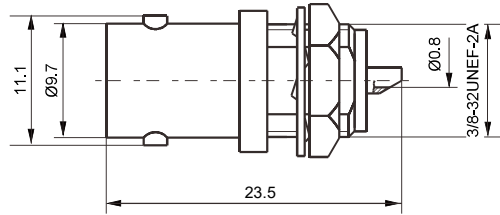


**BNC-KY-1**

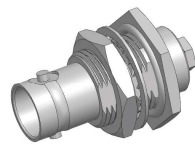
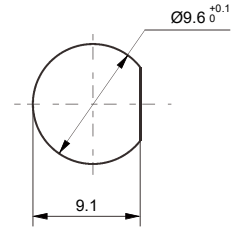




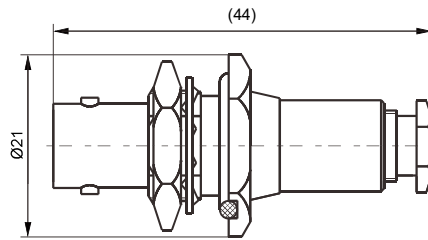
**BNC-75KY**



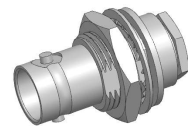
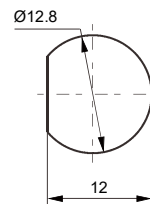
PC BOARD LAYOUT



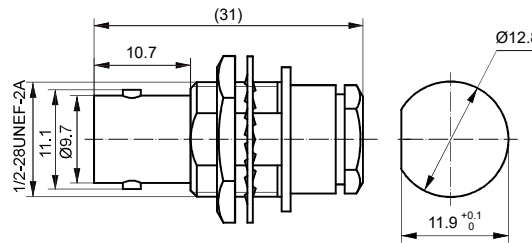
**BNC-KY2-1**



PC BOARD LAYOUT

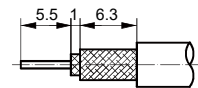


**BNC-KY4A**



PC BOARD LAYOUT

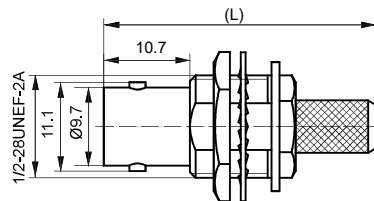
CABLE STRIPPING SIZE



Type	Cable
BNC-KY4A	SYV-50-2-2, SFF-50-2-2
BNC-KY5	SYV-50-3



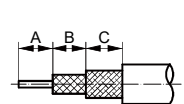
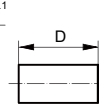
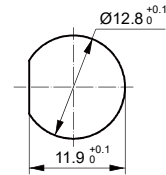
**BNC-KY2Y**



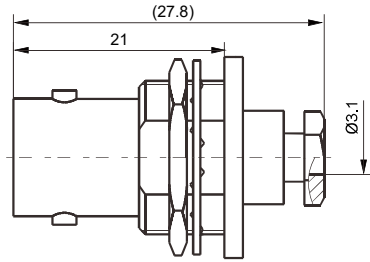
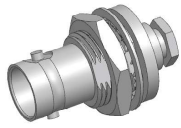
PC BOARD LAYOUT

CLAMP

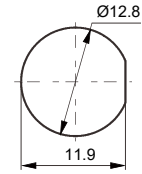
CABLE STRIPPING SIZE



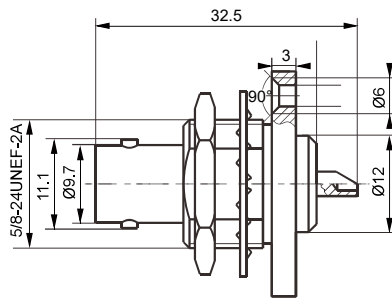
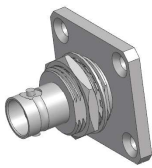
Type	L	A	B	C	D	Cable
BNC-KY2Y	30	2.4	11	5.6	6.5	SFF-50-1
						SYV-50-1
BNC-KY3Y	30	2.4	11	5.6	6.5	SFF-50-1.5-1
						SYV-50-2-1
BNC-KY4AY	35.5	5.5	5	4.5	10	SFF-50-2-2
						SYV-50-2-2
BNC-KY5Y	35.5	5.5	5	4.5	12	SYV-50-3



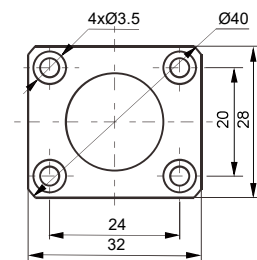
PC BOARD LAYOUT



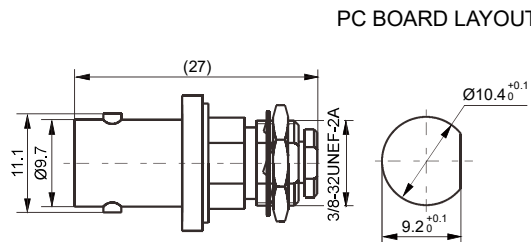
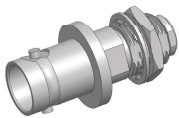
**BNC-KY3-1**



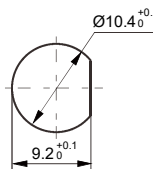
FLANGE SIZE



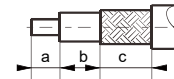
**BNC-KYF**



PC BOARD LAYOUT

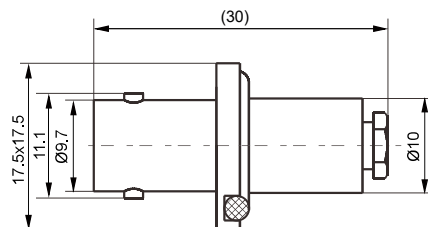
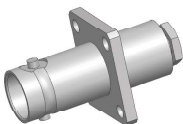


CABLE STRIPPING SIZE

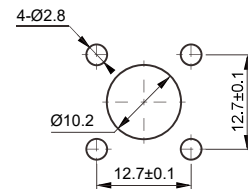


Type	a	b	c	Cable
BNC(S)-KY3	4.2	0	6	SFF-50-1.5-1
				SYV-50-2-1

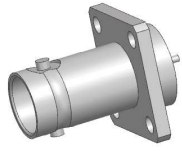
**BNC-KY3-2**



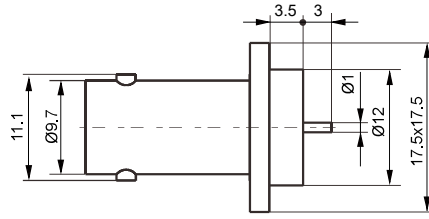
PC BOARD LAYOUT



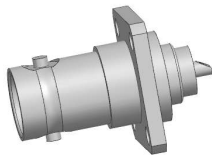
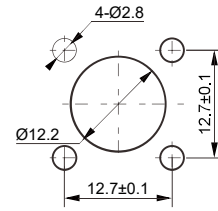
**BNC-KF3-1**



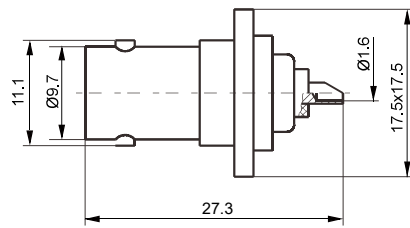
**BNC-KFD-5**



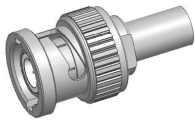
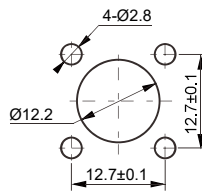
PC BOARD LAYOUT



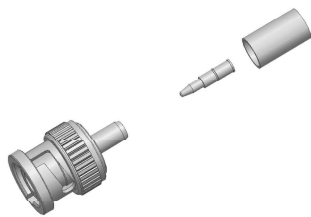
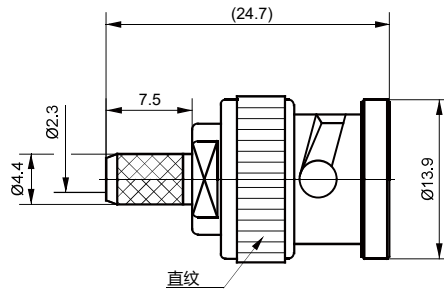
**BNC-KF**



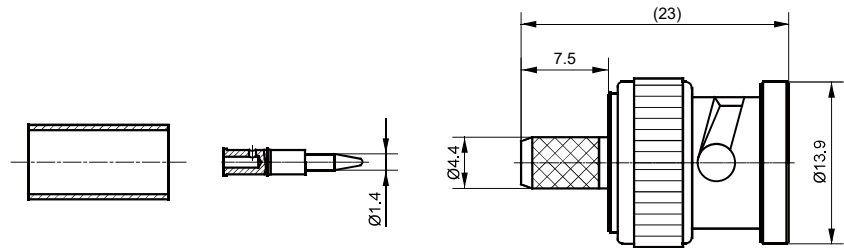
PC BOARD LAYOUT

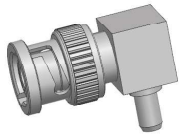


**BNC-J4Y**

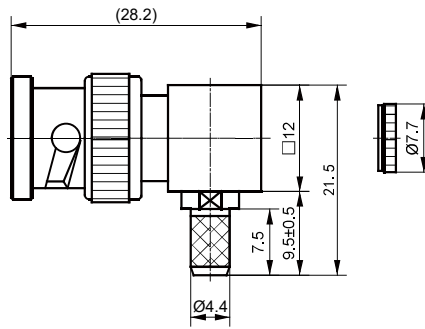


**BNC-J5AY**

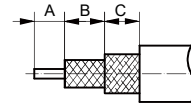




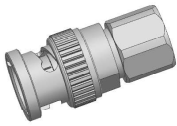
**BNC-JW5AY**



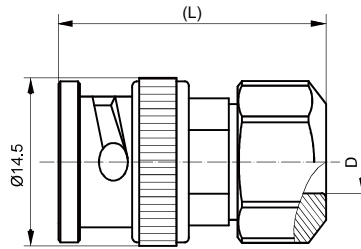
CABLE STRIPPING SIZE



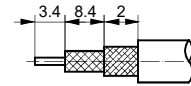
Type	D	L	A	B	C	Cable
BNC-J3	Ø3.1	31.1	5.5	0.7	7	SFF-50-1.5-1
						SYV-50-2-1
BNC-J4A	Ø4.2	31.1	5.5	0.7	7	SFF-50-2-2
						SYV-50-2-2
BNC-J5	Ø5.2	31.1	5.5	0.7	7	SYV-50-3
BNC-J12	Ø6.2	35	7	1	8	SYV-75-3
BNC-J13	Ø7.4	35	7	1	8	SYV-75-5-1
						SYV-75-5-2



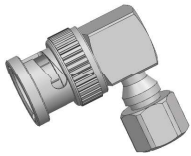
**BNC-J3**



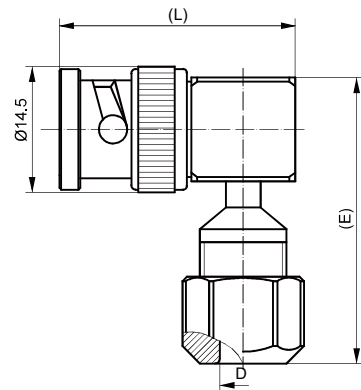
CABLE STRIPPING SIZE



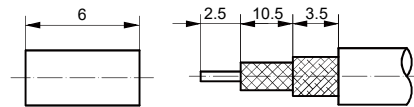
Type	D	E	L	Cable
BNC-JW3	Ø3.1	31.5	26	SFF-50-1.5-1
				SYV-50-2-1
BNC-JW4A	Ø4.2	27.4	26	SFF-50-2-2
				SYV-50-2-2
BNC-JW5	Ø5.2	27.4	26	SYV-50-3
BNC-JW12	Ø5.2	35	28	SYV-75-3



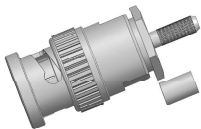
**BNC-JW3**



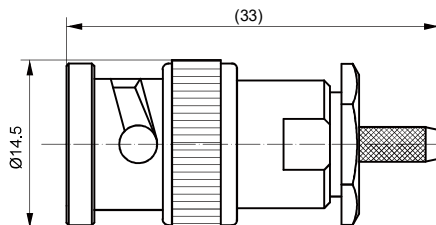
CLAMP CABLE STRIPPING SIZE



Type	Cable
BNC-J2Y	SFF-50-1, SYV-50-1
BNC-J3Y	SFF-50-1.5-1, SYV-50-2-1

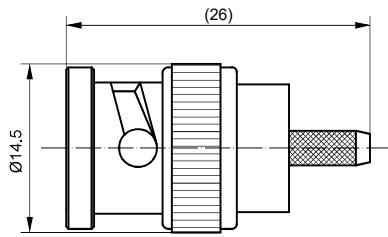


**BNC-J2Y**

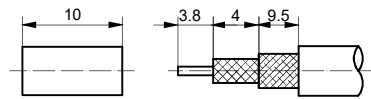




**BNC-J4AY**



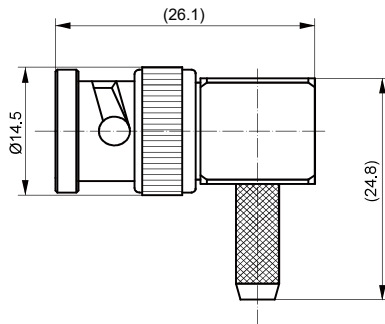
CLAMP CABLE STRIPPING SIZE



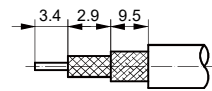
Type	Cable
BNC-J4AY	SFF-50-2-2、SYV-50-2-2
BNC-J5Y-1	SYV-50-3



**BNC-JW4AY**



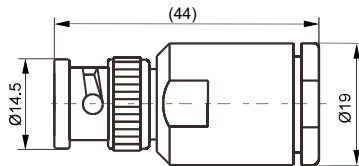
CABLE STRIPPING SIZE



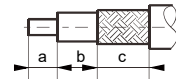
Type	Cable
BNC-JW4AY	SFF-50-2-2、SYV-50-2-2
BNC-JW5Y	SYV-50-3



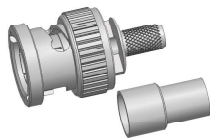
**BNC-J8**



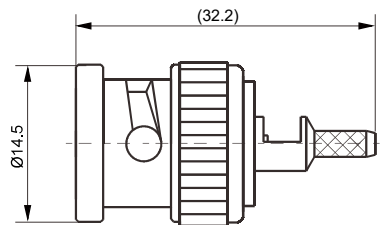
CABLE STRIPPING SIZE



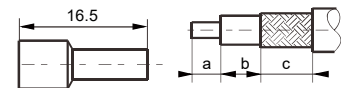
Type	a	b	c	Cable
BNC-J8	3.5	0	12	SYV-50-7-2



**BNC-75J3YA**

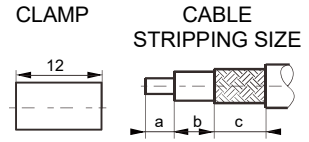
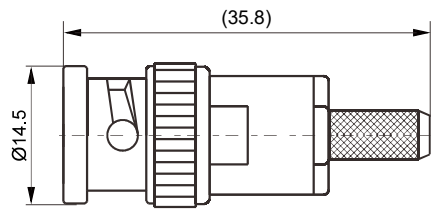


CLAMP CABLE STRIPPING SIZE



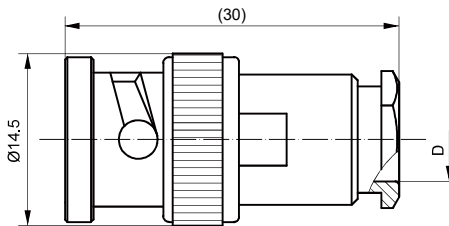
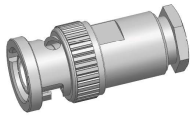
Type	a	b	c	Cable
BNC-75J3YA	2.3	2.2	5.4	SFYZ-75-2-1





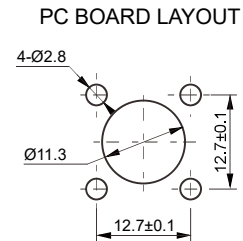
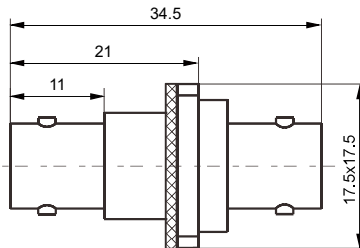
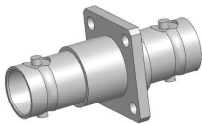
Type	a	b	c	Cable
BNC-J12Y	7.3	11.1	10	SYV-75-3

**BNC-J12Y**

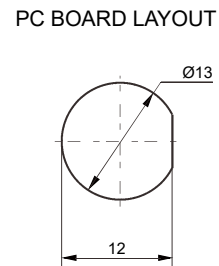
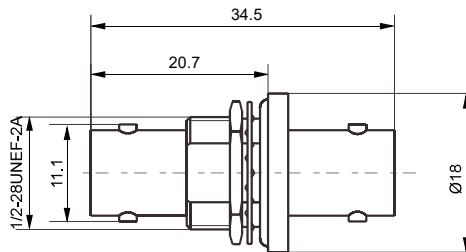
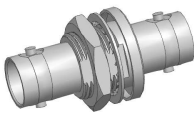


Type	D
BNC-J4A-1	Ø4.5
BNC-J-5-1	Ø5.5

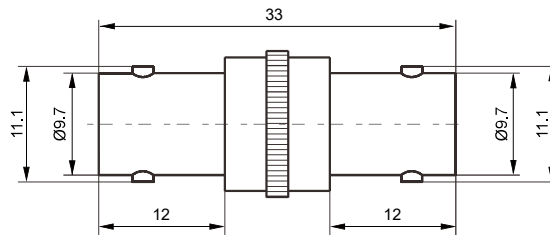
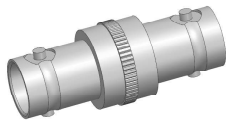
**BNC-J4A-1**



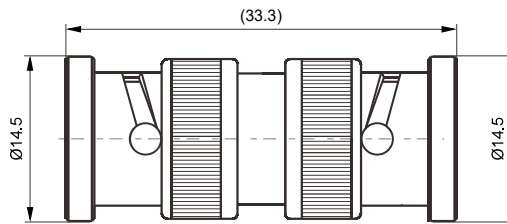
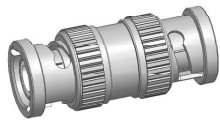
**BNC-KFK**



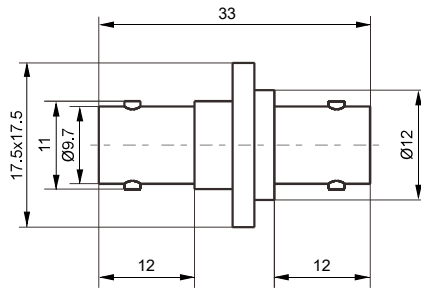
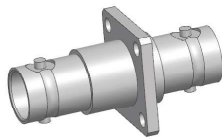
**BNC-KYK-2**



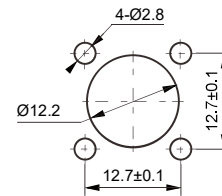
**BNC-KK**



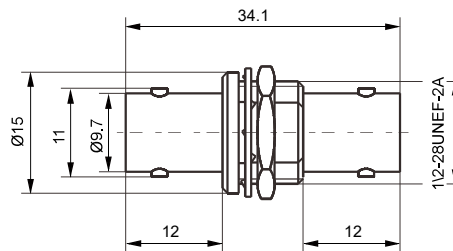
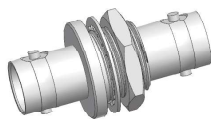
**BNC-JJ**



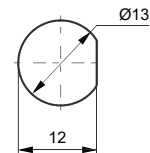
PC BOARD LAYOUT



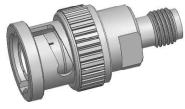
**BNC-KFK-1**



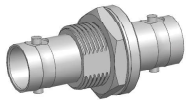
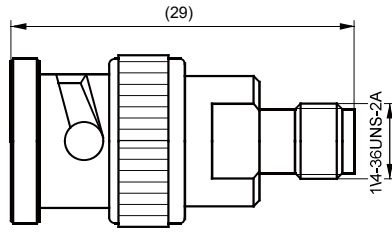
PC BOARD LAYOUT



**BNC-KYK-3**



**BNC-SMA-JK**



**BNC-50KKY**

